

Experts In Home Cleaning™

HEALTHYhome **PROHEAT™** all rounder

USER'S GUIDE

41C7 SERIES 220-240V

- 2** Thank You
- 3** Safety Instructions
- 4-5** Product View
- 6** Assembly
- 7-13** Operations
- 14-15** Maintenance and Care
- 16** Troubleshooting
- 17-18** Replacement Parts
- 19** Warranty
- 20** Consumer Care



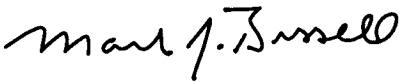
Thanks for buying a BISSELL Healthy Home PROheat™ All Rounder

We're glad you purchased a BISSELL Healthy Home PROheat™ All Rounder. Everything we know about floor care went into the design and construction of this complete, high-tech home cleaning system.

Your BISSELL Healthy Home PROheat™ All Rounder is well made, and we back it with a limited two year warranty. We also stand behind it with a knowledgeable, dedicated Consumer Care department, so, should you ever have a problem, you'll receive fast, considerate assistance.

My great-grandfather invented the floor sweeper in 1876. Today, BISSELL is a global leader in the design, manufacture, and service of high quality homecare products like your BISSELL Healthy Home PROheat™ All Rounder.

Thanks again, from all of us at BISSELL.



Mark J. Bissell
Chairman & CEO

IMPORTANT SAFETY INSTRUCTIONS

When using an electrical appliance, basic precautions should be observed, including the following:

READ ALL INSTRUCTIONS BEFORE USING YOUR CLEANING SYSTEM.

WARNING: To reduce the risk of fire, electric shock, or injury:

- Use indoors only
- Do not immerse
- Use only on surfaces moistened by cleaning process
- Do not leave machine when it is plugged in
- Do not service machine when it is plugged in
- If the supply cord is damaged, it must be replaced by the manufacturer or its service agent in order to avoid a hazard
- Do not use machine if it has been dropped, damaged, left outdoors or dropped into water
- Do not expose to rain, store indoors
- Do not pull or carry by cord, use cord as a handle, close door on cord, pull cord around sharp corners or edges, run appliance over cord, or expose cord to heated surfaces
- Do not carry the appliance while in use
- Do not unplug by pulling on cord; unplug by grasping plug not the cord
- Do not handle plug or appliance with wet hands
- Do not put any object into appliance openings, use with blocked opening or restrict air flow
- Do not expose hair, loose clothing, fingers or body parts to openings or moving parts
- Do not pick up hot or burning objects
- Do not pick up flammable or combustible materials (lighter fluid, petrol, kerosene, etc.) or use in the presence of explosive liquids or vapours
- Do not use appliance in an enclosed space filled with vapours given off by oil base paint, paint thinner, some moth proofing substances, flammable dust, or other explosive or toxic vapours

- Remove plug from electrical outlet before cleaning or maintaining the appliance
- Not intended for use by persons (including children) with reduced physical, sensory or mental capabilities, or lack of experience and knowledge, unless they have been given supervision or instruction concerning use of the appliance by a person responsible for their safety
- Young children should be supervised to ensure that they do not play with the appliance
- Do not pick up toxic material (chlorine bleach, ammonia, drain cleaner, petrol, etc.)
- Do not modify the Earthed plug
- Do not allow to be used as a toy
- Do not use for any purpose other than described in this User's Guide
- Use only manufacturer's recommended attachments
- Use only cleaning products formulated by BISSELL for use in this appliance to prevent internal component damage
- Keep openings free of dust, lint, hair, etc.
- Keep appliance on a level surface
- Turn off all controls before unplugging
- Be extra careful when cleaning stairs
- Pay close attention when working around children

SAVE THESE INSTRUCTIONS

This model is for household use only.

WARNING: This appliance must be earthed.

IMPORTANT
FOR OPERATION ON A 220-240 VOLT
A.C. 50/60 Hz POWER SUPPLY ONLY.

If your appliance is fitted with a nonrewireable BS 1363 plug it must not be used unless a 13 amp (ASTA approved to BS 1362) fuse is fitted in the carrier contained in the plug. (Spares may be obtained from your BISSELL supplier). If for any reason the plug is cut off, it must be disposed of, as it is an electric shock hazard should it be inserted into a mains socket.

Product view – water filtrated vacuum mode



Product view – wet cleaning mode



WARNING:

To reduce the risk of fire and electric shock due to internal component damage, use only BISSELL cleaning formulas intended for use with the deep cleaner.

Cleaning formula

Keep plenty of genuine BISSELL 2X cleaning formula on hand so you can clean and protect whenever it fits your schedule. Always use genuine BISSELL deep cleaning formulas. Non-BISSELL cleaning formulas may harm the machine and will void the warranty.



709 mL BISSELL
2X Fibre
Cleansing
Advanced
Formula with
Scotchgard™
protector
#62E5-E



709 mL
BISSELL 2X
Healthy Home
Multi-Allergen
Advanced
Formula with
Scotchgard™
protector
#31W6-E



709 mL BISSELL
2X Pet Stain &
Odor Advanced
Formula with
Scotchgard™
protector
#99K5-E



709 mL BISSELL
2X Natural
Orange
Advanced
Formula with
Scotchgard™
protector
#83P3-E



709 mL BISSELL
2X Lavendar
Essence
Advanced
Formula with
Scotchgard™
protector
#34B5-E



651 mL
Tough Stain
Pre-cleaner
#0400-E

Assembly

Your Healthy Home PROheat All Rounder is easy to assemble and requires no tools:

1. Attach hose to Quick Release™ Hose Door by inserting fitted end and turning clockwise until you hear it click into the locked position.
2. Attach hose solution line to unit by inserting fitted end into the machine. Turn clockwise until it snaps into place.
3. Snap the two wand pieces together by lining up tabs with holes and clicking together. Be sure that the wand piece with the adaptor (see figure 4a) is the one you will attach to the tool to. Attached assembled wand to grip using the same technique.
4. Snap the desired tool on the end of the wand. Place wand adaptor into the wand on the side of the unit.
5. Place either tool caddy or solution tank (if wet clean mode is desired) onto the back of the machine.



CAUTION:

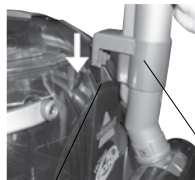
Do not plug in your cleaner until you have completely assembled it per the following instructions and are familiar with all instructions and operating procedures.



3



4a



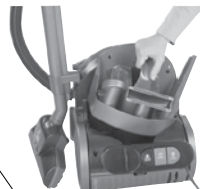
Wand Caddy



4



5



Wand Adaptor

Operations

Special features

Your **BISSELL Healthy Home PROheat All Rounder** is a complete home cleaning system. Not only does it come with a lot of unique features, it has been designed with you, the customer, in mind.

Built-in heater

Healthy Home PROheat All Rounder models all feature a patented built-in heater which heats the hot tap water you put in it to safely optimize cleaning effectiveness. The heater will never allow the cleaning solution temperature to exceed 82°C. The heater switch on the back of the machine controls the heater so you have the option to turn off the heat if you want to.

Scotchgard™ Protector

Carpet protection applied at the mill typically wears down over time from heavy foot traffic and everyday cleaning, including deep cleaning. To help restore this important protection, only BISSELL offers deep cleaning formulas with Scotchgard protector. This offers extra protection against dirt and tough stains to keep your carpets looking good longer.

Microban® antibacterial product protection

Microban antibacterial product protection is built into key components to help prevent the growth of harmful common household bacteria. It helps to keep the unit fresher and cleaner between uses.

Quick dry hard floor tool

BISSELL's unique hard floor tool uses a combination of gentle scrubbing action and strong suction to clean your hard floor surfaces and leave them dry within minutes.

Hard floor Microfibre pad

Soft and gentle microfibre pad is washable and re-usable, time and time again.

Tool caddy

The onboard tool caddy can be used to store any tools you are not currently using.

Quick Release™ Hose Door

The handy Quick Release™ Hose Door ensures that the machine's hose never rests on your carpet or hard floors, keeping them clean and dry while filling or emptying the tanks.

Wand caddy

Perfect for storage or when you take a break from cleaning, the wand caddy holds the grip, wands and tools firmly in place.



More than 7 million Australians suffer from asthma and allergies. The Sensitive Choice program has been developed by the National Asthma Council Australia to help Australians and New Zealanders make better lifestyle choices that may help manage asthma and allergies more effectively.

The BISSELL range of deep carpet cleaners and deep carpet cleaning formulas has been approved by the National Asthma Council Australia's Sensitive Choice program, and carries the Sensitive Choice butterfly logo. The Sensitive Choice blue butterfly symbol is a way of recognising products and services that support asthma and allergy care. Products that carry the blue butterfly may be better choices for people with asthma and allergies.

To learn more about managing asthma and allergies, visit the Sensitive Choice website at:

www.sensitivechoice.com.au



Operations

Special features continued

Cleaning tools

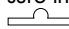

Your Healthy Home PROheat All Rounder comes with a variety of advanced tools, each one just right for a specific job. Some of these tools have multiple uses.

Air powered floor TurboBrush:

Perfect for carpets and rugs, this air-powered floor TurboBrush comes with an air flow adjuster. When using on normal length carpets and rugs set the selector to Low. For especially thick or long carpet or rugs, switch the selector to High. Additional airflow will be brought in from the top of the brush in the High position.



Multi-surface floor tool:

May be used on both carpet/rugs or hard floor surfaces. For use on carpets, make sure the tab is in the down position . This will hide the soft outer brushes. For hard floor surfaces, press the opposite tab in the down position . This will engage the soft outer brushes.



Crevice tool:

May be used for both dry vacuuming or wet cleaning.

NOTE: In wet cleaning mode the crevice tool will spray water and cleaning solution. Take care not to press the trigger when in water filtrated vacuum mode.

Vacuuming

Getting Ready

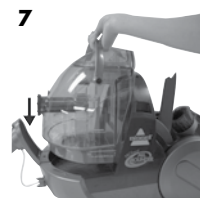
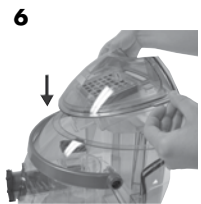
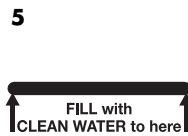
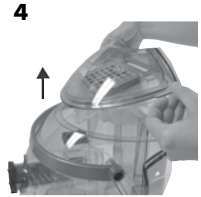
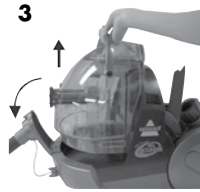
In order to maximize the cleaning and filtration power of the Healthy Home PROheat All Rounder make sure there is always water in the collection tank. Fill with clean tap water up to the tank fill line. Vacuuming without water in the collection tank will require more frequent washing of the filters to prevent build up of dust and other particles, which may cause damage to the motor.

1. If desired, make sure the tool caddy is in the back of the machine. Store appropriate vacuuming tools as needed.
2. Attach desired tool to end of wand (or directly to grip).

Operations

Vacuumping continued

3. Remove the collection tank from the unit by opening the Quick Release Hose Door and lifting the tank straight up by the handle.
4. Remove the top lid from the collection tank and set aside.
5. Fill the collection tank to the fill line (located on side of tank) with clean, cold water.
6. Replace the top lid back onto the top of the collection tank.
7. Set the collection tank back in the machine.
8. Select "WATER FILTER VACUUM" with the mode selector.
9. Close the Quick Release Hose Door tightly until it clicks into the locked position.
10. Plug into a proper outlet and press the ON/OFF button down into the ON position.



Emptying the tank

1. Open the Quick Release™ Hose Door and remove the collection tank by lifting straight up with the tank handle.
2. Remove the top lid from the collection tank and set it aside.
3. Empty dirty water into a sink or toilet, or outside. Pour the dirty water out from the corner of the tank. Rinse out the tank thoroughly.
4. Refill the tank if needed and replace the top lid back onto the top of the collection tank.
5. Set the collection tank back in the machine.
6. Close Quick Release hose door tightly until it clicks into locked position.
7. If finished vacuuming, refer to the Maintenance and care section starting on page 14.

Wet cleaning

Before you clean

1. Plan activities to give your carpets time to dry.
2. Thoroughly dry vacuum the area to be cleaned.
3. Plan your cleaning route to leave an exit path. It is best to begin cleaning in the corner farthest from your exit.

Operations

Wet cleaning continued

Getting ready to wet clean

NOTE: Remove tool caddy if in place.

1. Attach the desired wet cleaning tool to end of wand or grip.
2. Open the Quick Release™ Hose Door and select "WET CLEAN" with the mode selector.
3. Place the clean solution tank on a flat surface.
4. Fill the solution tank by first unscrewing the measuring cap. Always use genuine BISSELL formulas to maximize cleaning and for the safety of your machine. Fill tank to fill line with hot tap water. Add one full measuring cap of formula. Screw measuring cap tightly back onto the solution tank.
5. Place the solution tank back in the machine.
6. Plug into a proper outlet and press the ON/OFF, wet clean and heater (if desired) buttons down into the ON position.

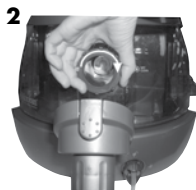
Note: Allow one minute for the built-in heater to warm up before cleaning. The Healthy Home PROheat All Rounder will be fully warmed and will provide optimal performance after one minute of continuous heated cleaning.

Carpet Cleaning

1. Attach carpet deep cleaning tool to end of wand.
2. Place carpet deep cleaning tool directly on carpet. Pull the spray trigger to spray cleaning solution while pulling the wand towards you.
3. Keeping nozzle of the carpet deep cleaning tool firmly against the carpet surface, continue to make slow forward and backward wet passes until no more dirt can be removed. **Do not overwet.**
4. Release spray trigger and make slow forward and backward passes over the same area to remove any residual dirty water.
5. Repeat wet cleaning passes until water being pulled up appears clean.
6. Continue passes without pressing the spray trigger until you can't see any more water being pulled up.

Tip:

Move furniture to another area if cleaning an entire room.



4b



4d



4a



4c



5



ATTENTION:

Some Berber carpets have a tendency to fuzz with wear. Repeated strokes in the same area with an ordinary vacuum or deep cleaner may aggravate this condition.

Operations

Wet cleaning continued

Carpet Cleaning continued

7. Continue to clean entire carpet working in one meter by one meter sections.
8. If machine loses suction, stop spraying and check the collection tank level. Empty if necessary.
9. If the machine stops spraying turn off wet clean button immediately and check the solution tank level.

NOTE: Never run in wet clean mode when the clean water formula tank is dry or missing.

When you are finished

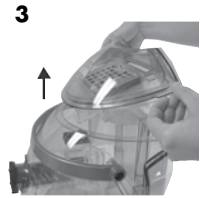
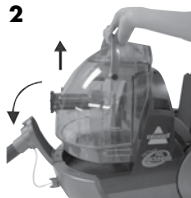
1. Turn off the heater, wet clean, and power buttons.
2. Remove the collection tank from the unit by opening the quick release hose holder and lifting the tank straight up by the handle.
3. Remove the top lid from the collection tank and set it aside.
4. Empty dirty water into a sink, toilet or outside. Pour the dirty water out from the corner of the tank. Rinse out the tank thoroughly.

NOTE: You may leave the solution tank with water and formula in it so you are ready for the next use.

5. Allow all parts to dry before storing.

Hard Floor Cleaning

1. See "Getting Ready to Wet Clean" on Page 10.
2. Be sure to use BISSELL Hard Floor Solutions in the solution tank for hard floor cleaning. Fill the formula tank by first unscrewing the measuring cap. Always use genuine BISSELL formulas to maximize cleaning and for the safety of your machine. Fill tank to fill line with hot tap water. Add one full cap of formula. Screw measuring cap tightly back onto the solution tank.
3. Set the solution tank back in the machine.



Operations

Wet cleaning continued

Hard Floor Cleaning continued

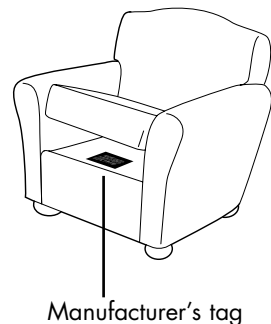
4. Attach microfibre pad to quick dry hard floor tool by attaching to the Velcro strips on the top of the tool.
5. Attach the quick dry hard floor tool to end of the wand.
6. Place tool directly on the hard floor surface, resting on the pad.
7. Squeeze the spray trigger to moisten the pad with cleaning solution.
Caution: Do not oversaturate.
8. Move the tool back and forth across the floor to clean. Squeeze spray trigger as needed.
9. Tilt the tool forward and pull back. This will create the best suction and will help get the hard floor surface as dry as possible.
10. Continue until room is complete.
11. See "When You Are Finished" instructions on page 11.
12. Be sure to remove the microfibre pad and clean it by hand or machine wash as needed. Allow it to dry completely before next use.



Upholstery Cleaning

Your Healthy Home PROheat All Rounder comes with special tools for vacuuming and wet cleaning upholstery, stairs and more.

7. **Important!** If using to wet clean upholstery, check the upholstery tags proceeding.
 - a. Check manufacturer's tag before cleaning. "W" or "WS" on the tag means you can use your PROheat All Rounder. If the tag is coded with an "X" or an "S" (with a diagonal stripe through it), or says "Dry Clean Only", do not proceed with deep cleaning. Do not use on velvet or silk. If manufacturer's tag is missing or not coded, check with the furniture maker or the furniture dealer.
 - b. Check for colourfastness in an inconspicuous place.
 - c. If possible, check upholstery stuffing. Coloured stuffing may bleed through fabric when wet.



Operations

Wet cleaning continued

Upholstery Cleaning continued

- d. Plan activities to allow upholstery time to dry.
 - e. Vacuum thoroughly.
2. Refer to the "Getting Ready to Wet Clean" on page 10.
3. Attach the desired wet cleaning tool to the wand or grip.
4. Clean by pressing the spray trigger to spray solution onto the area to be cleaned. Slowly move the tool back and forth over the soiled surface. Release the spray trigger to suction soiled water. Continue to clean the area, working in small sections, until no more dirt can be removed. Suction as needed to remove as much water as possible.
Caution: Do not overwet.
5. Remove and rinse tools in clean, running water. Dry and put away.
6. See "When you are finished" instructions on page 11.

Tip:

It is recommended that you suction clean water from the tap to rinse out the hose.

Maintenance and care

Machine storage

Once your cleaning is complete, make sure the dirty water from the collection tank is emptied. Rinse out and dry before the next use. For wet cleaning, the solution tank can be left filled and ready to use.

Note: Store your Healthy Home PROheat All Rounder in a protected dry area. Since this product uses water it must not be stored where there is a danger of freezing. Freezing will damage the internal components and void the warranty.

Machine care

For best results, a few simple steps can assure your machine is well maintained after your cleaning is complete.

1. Press all buttons OFF. Unplug the machine and wrap the cord.
2. After emptying the dirty water from the collection tank, rinse it out thoroughly with hot water. Remove all inner parts (water filtration tower and mode selector) if desired. Rinse them and allow to dry before returning into tank.

Note: To remove inner parts, turn mode selector to remove. Pull mode selector straight out towards you. The water filtration tower can now be taken out through the top of the tank.

3. For wet cleaning, remove and clean all tools that were used. Allow to dry before storing.
4. Remove the hose, taking care to keep both ends up to avoid spilling. Dump out any remaining water and flush clean with hot tap water. Allow to dry before storing.



WARNING:

To reduce the risk of fire and electric shock due to internal component damage, use only BISSELL cleaning formula intended for use with the deep cleaner. Non-BISSELL cleaning formula may harm the machine and void the warranty.



Water Filtration Tower

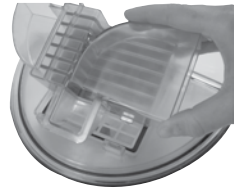
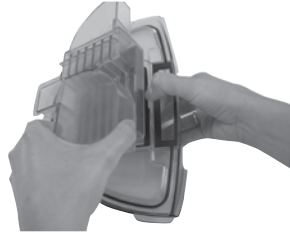


Mode Selector

Maintenance and care

Machine care continued

- 5. a.** Pre-motor filter: Take apart the top lid by pulling the tab away from the separator. Inspect the foam filter. If dirty, rinse clean and allow to dry before returning it to the machine. Re-assemble the top lid by placing the filter in its spot and re-attaching the separator. Use care to make sure the "T" pieces are lined up under the shallow grooves on the top lid itself. For replacement filters, see pages 18-19.
- b.** HEPA Media filter*: This filter is located at the back of the machine, underneath the Quick Release Cord Wrap. Use one finger to depress the latch and pull the door down. Open towards you and down to the ground. Use two hands to remove the filter from its slot. If dirty, rinse clean and allow to dry before returning it to the machine. Make sure the filter door is fully closed prior to operating the machine. For replacement filters see pages 18-19.



*The filter media, not the vacuum as a whole, complies with the IEST-RP-CC001.5 HEPA standard.

Troubleshooting



WARNING:

To reduce the risk of fire, electric shock, or injury unplug from outlet before servicing.

Reduce spray or no spray

Possible causes

1. Make sure power is on
2. Solution tank may be empty
3. Tank may not be seated properly
4. Hose solution line may be disconnected
5. Wet clean is not turned on

Machine is not suctioning

Possible causes

1. Collection tank may not be placed properly
2. Collection tank may not be assembled properly
3. Wand tool connections are not tight
4. Collection tank is full
5. Float has tripped
6. Pre-motor filter is dirty

Built-in heater light does not illuminate

Possible causes

1. The heater button has not been depressed
2. The ON/OFF button has not been depressed

Remedies

1. Press power button if needed
2. Fill tank according to directions
3. Turn ON/OFF, heater and wet clean button off. Remove and reseat tank
4. Check connection at front of machine
5. Depress wet clean button to turn on

Remedies

1. Open Quick Release™ Hose Door, lift out tank and re-seat. Re-latch Quick Release™ Hose Door
2. Check to make sure the top lid is properly seated
3. Check all connections (At grip, wand and tool) Push tight if necessary.
4. Empty collection tank by following instruction on page 9
5. Check to see if tank needs to be emptied. Make sure float is down towards bottom of tank.
6. Remove top lid. Remove and clean pre-motor filter by following instructions on page 15. Filter must be completely dry before using again

Remedies

1. Depress the heater button
2. Depress the ON/OFF button

Other maintenance or service not included in the manual should be performed by an authorized service representative.

Thank you for selecting a BISSELL product.

Please do not return this product to the store.

Replacement parts

Below a list of common replacement parts. While not all of these parts may have come with your specific machine, all are available to you for purchase, if desired.**

Item	Part No.	Part Name
1	203-7063	Multi-Surface Floor Tool
2	203-8229	Air Powered Floor TurboBrush
3	203-7073	5" Brush
4	203-7066	Wand
5	203-7067	Adaptor
6	203-7068	Crevice Tool
7	203-7069	Upholstery Dusting Brush
8	203-7070	Carpet Deep Cleaning Tool
9	203-7071	Carpet Deep Cleaning Tool Brush Strip
10	203-7072	Carpet Deep Cleaning Tool Adaptor
11	203-7065	4" Upholstery Tool
12	203-8230	Quick Dry Hard Floor Tool (pads not included)
13	203-7076	Hard Floor Microfibre Pads (2 Pack)
14	203-7077	Drain Cleaner
15	203-7078	Tool Caddy
16	203-8275	Hose Grip Assembly
17	203-8227	Measuring Cap
18	203-7082	Pre-Motor Filter
19	203-7083	HEPA Media Filter*
20	203-7084	Solution Tank
21	203-7085	Small cap/insert
22	203-7086	HEPA Filter Door
23	203-7087	Float
24	203-7088	Diverter
25	203-7089	Water Filtration Tower
26	203-7090	Water Filtration Tower Gasket
27	203-7091	Separator with Filter
28	203-7092	Top Lid Assembly
29	203-8228	Lid
30	203-7096	Collection Tank
31	203-7097	Collection Tank Assembly
32	203-7098	Motor Duct Gasket
33	203-7099	Quick Release Hose Door Assembly
34	203-7100	Carry Handle Assembly
35	203-7102	Caster Wheel

****Not all parts are included with every model.**

*The filter media, not the vacuum as a whole, complies with the IEST-RP-CC001.5 HEPA standard.

Replacement parts

1



2



3



4



5



6



7



8



9



10



11



12



13

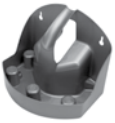


14



(Pads not included)

15



16



17



18



19



20



21



22



23



24



25



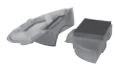
26



27



28



29



30



31



32



33



34



35



Cleaning Formula: Refer to the bottom of page 5 of this guide for a full selection of cleaning formula available for purchase.

Warranty

This warranty gives you specific legal rights, and you may also have other rights which may vary from country to country. If you need additional instruction regarding this warranty or have questions regarding what it may cover, please contact BISSELL Consumer Care by E-mail, telephone, regular mail as described below, or contact your local in country distributor.

Limited Two Year Warranty

Subject to the *EXCEPTIONS AND EXCLUSIONS identified below, BISSELL will repair or replace (with new or remanufactured components or products), at BISSELL's option, free of charge from the date of purchase by the original purchaser, for two years any defective or malfunctioning part due to manufacturer defect.

This warranty applies to product used for personal, and not commercial or rental service. This warranty does not apply to fans or routine maintenance components such as filters. Damage or malfunction caused by negligence, abuse, neglect, unauthorized repair, or any other use not in accordance with the User's Guide is not covered.

BISSELL recommends that the original packaging be kept for the duration of the warranty period in case such need arises within the warranty period that the item need re-packing and transportation.

For Australian inquiries:

Monday – Friday 9 am - 5 pm

BISSELL AUSTRALIA PTY LIMITED

42 Rocco Drive

Scoresby 3179

Victoria

Australia

Telephone: 1-800-811-183

For New Zealand inquiries:

Monday – Friday 9 am - 5 pm

Parex Industries LTD.

5 Tolich Place

Henderson 0610

Auckland

New Zealand

Telephone: 0800-247-735

*EXCEPTIONS AND EXCLUSIONS FROM THE TERMS OF THE LIMITED WARRANTY

BISSELL AND ITS IN-COUNTRY DISTRIBUTORS ARE NOT LIABLE FOR INCIDENTAL OR CONSEQUENTIAL DAMAGES OF ANY NATURE ASSOCIATED WITH THE USE OF THIS PRODUCT. BISSELL'S LIABILITY WILL NOT EXCEED THE PURCHASE PRICE OF THE PRODUCT.

THIS WARRANTY IS EXCLUSIVE AND IN LIEU OF ANY OTHER WARRANTIES EITHER ORAL OR WRITTEN. ANY IMPLIED WARRANTIES WHICH MAY ARISE BY OPERATION OF LAW, INCLUDING THE IMPLIED WARRANTIES OF MERCHANTABILITY AND FITNESS FOR A PARTICULAR PURPOSE, ARE LIMITED TO THE TWO YEAR DURATION FROM THE DATE OF PURCHASE AS DESCRIBED ABOVE.

FOR AUSTRALIAN CONSUMERS ONLY: OUR GOODS COME WITH GUARANTEES THAT CANNOT BE EXCLUDED UNDER THE AUSTRALIAN CONSUMER LAW. YOU ARE ENTITLED TO A REPLACEMENT OR REFUND FOR A MAJOR FAILURE AND FOR COMPENSATION FOR ANY OTHER REASONABLY FORESEEABLE LOSS OR DAMAGE. YOU ARE ALSO ENTITLED TO HAVE THE GOODS REPAIRED OR REPLACED IF THE GOODS FAIL TO BE OF ACCEPTABLE QUALITY AND THE FAILURE DOES NOT AMOUNT TO A MAJOR FAILURE.

THIS WARRANTY IS IN ADDITION TO OTHER RIGHTS OR REMEDIES UNDER LAW. NOTHING IN THIS WARRANTY EXCLUDES, LIMITS OR MODIFIES ANY LIABILITY OF BISSELL WHICH IS IMPOSED BY LAW, OR LIMITS OR MODIFIES ANY REMEDY AVAILABLE TO THE CONSUMER WHICH IS GRANTED BY LAW.

TO MAKE A CLAIM UNDER THIS WARRANTY CONTACT BISSELL AUSTRALIA PTY LTD (DETAILS ABOVE). CONTACT BISSELL PRIOR TO RETURNING ANY GOODS. WHERE AGREED, BISSELL WILL REIMBURSE REASONABLE POSTAGE / HANDLING COSTS (IF ANY) FOR RETURNING GOODS TO BISSELL.

If your BISSELL product should require service:

Call BISSELL Consumer Care at the numbers below and we will give you the location of a BISSELL Authorized Service Center in your area. If you have questions about your warranty or need replacement parts please contact the numbers below.

For Australian inquiries:

Monday – Friday 9 am - 5 pm

BISSELL AUSTRALIA PTY LIMITED

42 Rocco Drive

Scoresby 3179

Victoria

Australia

Telephone: 1-800-811-183

For New Zealand inquiries:

Monday – Friday 9 am - 5 pm

Parex Industries LTD.

5 Tolich Place

Henderson 0610

Auckland

New Zealand

Telephone: 0800-247-735

Or visit the BISSELL website - **www.bissell.com**

When contacting BISSELL, have model number of cleaner available.

Please record your Model Number: _____

Please record your Purchase Date: _____

NOTE: Please keep your original sales receipt. It provides proof of purchase date in the event of a warranty claim. See Warranty on page 19 for details.



Do not throw the appliance away with the normal household waste at the end of its life, but hand it in at an official collection point for recycling. By doing this you will help to preserve the environment.



Experts In Home Cleaning™

©2012 BISSELL Homecare, Inc.
All rights reserved. Printed in China
Part Number 120-4481

Rev 3/12

Visit our website at:
www.bissell.com

Microban® is a registered trademark
of Microban Product Company
Scotchgard is a trademark of 3M