

Experts In Home Cleaning™

STEAMmop SELECT™

USER'S GUIDE

23V8-F SERIES

- 2 Thank You
- 3 Safety Instructions
- 4 Product View
- 5 Assembly
- 7-8 Operations
- 9 Maintenance and Care
- 9 Troubleshooting
- 10 Replacement Parts
- 10 Additional Accessories
- 11 Warranty
- 12 Product Registration
- 12 Consumer Care



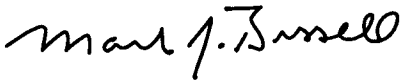
Thanks for buying a BISSELL Steam Mop Select

We're glad you purchased a BISSELL Steam Mop Select. Everything we know about floor care went into the design and construction of this complete, high-tech home cleaning system.

Your BISSELL Steam Mop Select is well made, and we back it with a limited one year warranty. We also stand behind it with a knowledgeable, dedicated Consumer Care department, so, should you ever have a problem, you'll receive fast, considerate assistance.

My great-grandfather invented the floor sweeper in 1876. Today, BISSELL is a global leader in the design, manufacture, and service of high quality homecare products like your BISSELL Steam Mop Select.

Thanks again, from all of us at BISSELL.



Mark J. Bissell
Chairman & CEO

IMPORTANT SAFETY INSTRUCTIONS

When using an electrical appliance, basic precautions should be observed, including the following:

READ ALL INSTRUCTIONS BEFORE USING YOUR STEAM MOP SELECT.

Always connect to a properly Earthed outlet. Unplug from outlet when not in use and before conducting maintenance or troubleshooting.

⚠ WARNING: To reduce the risk of fire, electric shock, or injury:

- Use indoors only
- Do not immerse
- Use only on surfaces moistened by cleaning process
- Do not leave machine when it is plugged in
- Do not service machine when it is plugged in
- If the supply cord is damaged, it must be replaced by the manufacturer or its service agent in order to avoid a hazard
- Do not use machine if it has been dropped, damaged, left outdoors or dropped into water
- Do not expose to rain, store indoors
- Do not pull or carry by cord, use cord as a handle, close door on cord, pull cord around sharp corners or edges, run appliance over cord, or expose cord to heated surfaces
- Do not carry the appliance while in use
- Do not unplug by pulling on cord; unplug by grasping plug not the cord
- Do not handle plug or appliance with wet hands
- Do not put any object into appliance openings, use with blocked opening or restrict air flow
- Do not expose hair, loose clothing, fingers or body parts to openings or moving parts
- Do not pick up hot or burning objects
- Do not pick up flammable or combustible materials (lighter fluid, petrol, kerosene, etc.) or use in the presence of explosive liquids or vapours
- Do not use appliance in an enclosed space filled with vapours given off by oil base paint, paint thinner, some moth proofing substances, flammable dust, or other explosive or toxic vapours
- Remove plug from electrical outlet before cleaning or maintaining the appliance
- Do not run appliance over supply cord.
A hazard may occur if the appliance runs over the supply cord

- Not intended for use by persons (including children) with reduced physical, sensory or mental capabilities, or lack of experience and knowledge, unless they have been given supervision or instruction concerning use of the appliance by a person responsible for their safety
- Young children should be supervised to ensure that they do not play with the appliance
- Do not pick up toxic material (chlorine bleach, ammonia, drain cleaner, petrol, etc.)
- Do not modify the Earthed plug
- Do not allow to be used as a toy
- Do not use for any purpose other than described in this User's Guide
- Use only manufacturer's recommended attachments
- Use only cleaning products formulated by BISSELL for use in this appliance to prevent internal component damage
- Keep openings free of dust, lint, hair, etc.
- Keep appliance on a level surface
- Turn off all controls before unplugging
- Be extra careful when cleaning stairs
- Liquid or steam must not be directed towards equipment containing electrical components
- Pay close attention when working around children

SAVE THESE INSTRUCTIONS

THIS MODEL IS FOR HOUSEHOLD USE ONLY.

⚠ WARNING:

This appliance must be Earthed.

⚠ The symbol  means
WARNING: Danger of scalding.

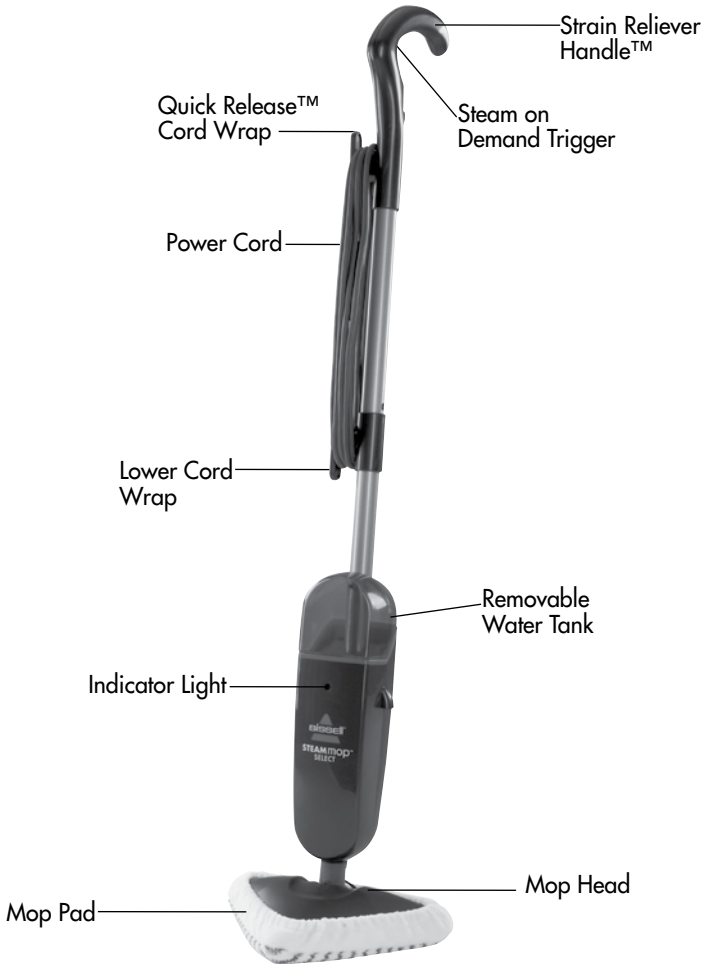
⚠ Surface may be hot. Avoid contact.

IMPORTANT

FOR OPERATION ON A 220-240 VOLT A.C. 50/60 Hz POWER SUPPLY ONLY.

If your appliance is fitted with a nonrewireable BS 1363 plug it must not be used unless a 13 amp (ASTA approved to BS 1362) fuse is fitted in the carrier contained in the plug. Spares may be obtained from your BISSELL supplier. If for any reason the plug is cut off, it must be disposed of, as it is an electric shock hazard should it be inserted into a 13 amp socket.

Product view



Optional Accessories:



Washable Mop Pads-2 Pack



Steam Mop Scented Water-Eucalyptus Mint

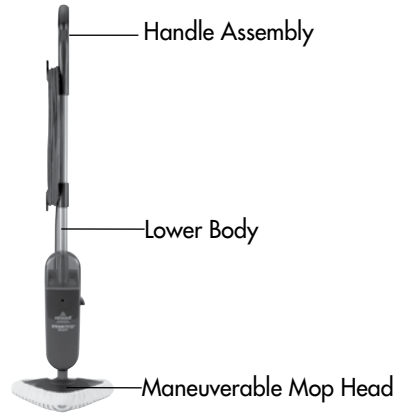
Assembly

Your Steam Mop Select assembles quickly and easily. Your Steam Mop Select is packaged with the following items:

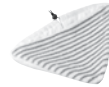
- **Handle Assembly**
- **Lower Body**
- **Maneuverable Mop Head**
- **Removable Water Tank**
- **2 Steam Mop Select Mop Pads**

1. Attach lower body to mop head by snapping it into place.
2. Slide handle assembly down into lower body until it snaps into place.
3. Slide water tank onto lower body and gently push tank into place.

Steam Mop Select assembly is now complete.



Removable Water Tank



Triangular Mop Pads



Special features

Removable Water Tank

The water tank is located on the top of the Steam Mop Select. It can be refilled with water any time during use. Distilled or demineralized water is recommended in place of tap water.

Do not use chemicals with your Steam Mop Select.

Indicator Light

The indicator light will glow when the Steam Mop Select is plugged in.

Maneuverable Mop Head

This triangular mop head allows you to clean in tight spaces and under cabinets.

Reusable Mop Pads

These reusable microfiber mop pads are machine washable and safe for fully sealed hard floor surfaces. The all-white "soft" pad is best for everyday use on delicate flooring like sealed hardwoods and laminate. The gray and white striped pad can be used for scrubbing heavily soiled floors and tougher messes.

Steam on Demand Trigger

Press to release steam.

Tip:

Do not attempt to use your Steam Mop Select without water in the tank.



More than 7 million Australians suffer from asthma and allergies. The Sensitive Choice program has been developed by the National Asthma Council Australia to help Australians and New Zealanders make better lifestyle choices that may help manage asthma and allergies more effectively.

The BISSELL range of steam mops, deep carpet cleaners and deep carpet cleaning formulas has been approved by the National Asthma Council Australia's Sensitive Choice program, and carries the Sensitive Choice butterfly logo. The Sensitive Choice blue butterfly symbol is a way of recognising products and services that support asthma and allergy care. Products that carry the blue butterfly may be better choices for people with asthma and allergies.

To learn more about managing asthma and allergies, visit the Sensitive Choice website at:

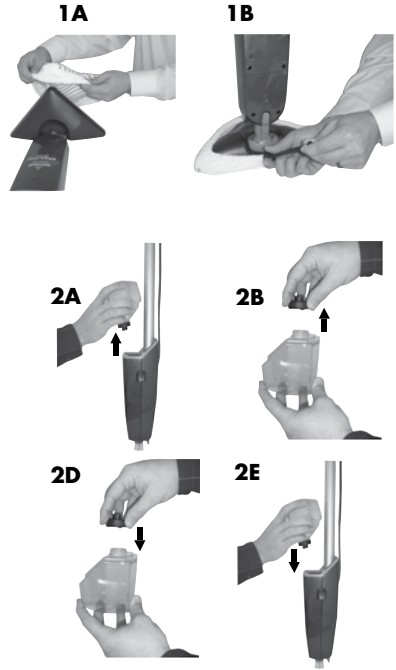
www.sensitivechoice.com.au

Operations

Getting ready

The mop pad may have already come attached to the mop head, if not follow steps 1A and 1B below.

1. Attach mop pad
 - A. Set mop head in mop pad, making sure toggle is located on the back.
 - B. Tighten mop pad by pulling on elastic cord while pressing on toggle.
2. Fill the water tank
 - A. Remove tank by lifting straight up and away from unit.
 - B. Unscrew cap at bottom of water tank.
 - C. Fill water tank with water. For best results, water should be at room temperature.
 - D. Replace the cap, tighten until snug.
 - E. Replace water tank by gently sliding tank into place.
3. Twist the quick release cord wrap clockwise to unwrap the power cord completely and plug into a 220-240 Volt outlet as described on the **Important Safety Instructions**, page 3.
4. The indicator light will illuminate when the Steam Mop Select is plugged in.



Tip:

Use of distilled water is recommended to prolong the life of your Steam Mop Select

Operations

Before you clean

Thoroughly sweep or vacuum floor prior to cleaning with the Steam Mop Select.

Cleaning hard floors

Your Steam Mop Select is designed to clean hard flooring such as ceramic tile, vinyl, laminate, marble, stone and sealed hard wood floors. Use of your Steam Mop Select on waxed or some unwaxed floors may result in a diminished glossiness. The Steam Mop Select is not for use on unsealed wood floors. For best results test in an inconspicuous area and check the care instructions from your flooring manufacturer.

1. Plug the unit in and wait 30 seconds for it to heat up. Begin cleaning by slowly passing over surface while pressing the steam on demand trigger to emit steam as needed.
2. To sanitize an area of your floor, (attack invisible germs and bacteria) place the Steam Mop Select over the spot for a minimum of 15 seconds using continuous steam, but no longer than 20 seconds using continuous steam. For larger areas, overlap swivel head placement.

Important: Sanitizing on timber floors is not recommended as prolonged application of steam in one area increases the risk of damage to the surface treatment on timber floors, especially in areas with regular foot traffic and direct sunlight, which will wear down timber floor surface treatments making it more susceptible to steam damage. See CAUTION to the right.

3. When the Steam Mop Select stops emitting steam, unplug the unit. Simply remove the water tank, refill, and continue cleaning.



WARNING:

Never put descaling, alcoholic, or detergent products into the steam cleaner, as this may damage it or make it unsafe for use. Only use BISSELL authorized aromatic products.



CAUTION:

Exercise extreme care when using the Steam Mop Select on timber flooring. Ensure the Steam Mop Select on an inconspicuous area prior to mopping a large floor area. The Steam Mop Select generates hot steam, so when depressing the trigger to apply steam, ensure the Steam Mop Select is moving continuously. The trigger does not need to be depressed at all times. Prolonged application of steam in one area increases the risk of damage to the surface treatment on timber floors. Check with your timber floor treatment application specialist prior to Steam Mop Select operation. Regular foot traffic and direct sunlight will wear down timber floor surface treatment making it more susceptible to steam damage. Exercise extreme care when using the Steam Mop Select on timber flooring.

Maintenance and care

When you're done

1. Unplug power cord from outlet.
2. Carefully remove mop pad from flip head, as mop pad and lower assembly may be hot.
3. Any water remaining in the water tank should be emptied prior to machine storage.
4. Mop pad can be machine washed in warm water. Use only liquid detergents. Do not use fabric softeners. For best results, air dry.
5. Wrap power cord around quick release cord wrap on side of Steam Mop Select.
6. Wipe all surfaces of Steam Mop Select with a soft cloth. Store upright in a protected, dry area.



CAUTION:

Upright storage of the Steam Mop Select with a wet mop pad may result in the formation of white marks on your floor. To remove the white marks, clean area with vinegar.

Troubleshooting

Reduced steam or no steam.

Possible Causes

1. Water tank empty

Remedies

1. Fill tank

Other maintenance or service not included in the manual should be performed by an authorized service representative.

Thank you for selecting a BISSELL product.

Please do not return this product to the store.

For any questions or concerns, BISSELL is happy to be of service.

For Australian inquiries:

Telephone: 1.800.811.183

Monday –Friday

9 am – 5 pm

BISSELL AUSTRALIA
PTY LIMITED

42 Rocco Dr.

Scoresby 3179

Victoria

Australia

For New Zealand

inquiries:

Telephone: 0800.247.735

Monday – Friday

9 am – 5 pm

Parex Industries Ltd.

5 Tolich Place

Henderson 0610

Auckland

New Zealand

For all other inquiries:

Telephone:

01.616.453.4451

Monday – Friday

8 am – 4 pm

Fax: 01.616.453.1383

BISSELL Homecare, Inc.

P.O. Box 1888

Grand Rapids, Michigan,

49501 U.S.A.

Replacement parts – BISSELL Steam Mop Select

Item	Part No.	Part Name
1	203-7738	Handle Assembly
2	203-7734	Water Tank with Cap and Insert
3	203-7735	Cap and Insert Assembly



Additional Accessories

Item	Part No.	Part Name
1	203-2271	Replacement Mop Pads - 2 pack
2	3252-1	Eucalyptus Mint Natural Aroma
3	59V4	Steam Mop Scented Water Eucalyptus Mint 32 FL oz
4	203-2168	Storage Hook with Screws



Warranty

This warranty gives you specific legal rights, and you may also have other rights which may vary from country to country. If you need additional instruction regarding this warranty or have questions regarding what it may cover, please contact BISSELL Consumer Care by E-mail, telephone, regular mail as described below, or contact your local in country distributor.

Limited One Year Warranty

Subject to the *EXCEPTIONS AND EXCLUSIONS identified below, BISSELL will repair or replace (with new or remanufactured components or products), at BISSELL's option, free of charge from the date of purchase by the original purchaser, for one year any defective or malfunctioning part due to manufacturer defect.

This warranty applies to product used for personal, and not commercial or rental service. This warranty does not apply to fans or routine maintenance components such as filters. Damage or malfunction caused by negligence, abuse, neglect, unauthorized repair, or any other use not in accordance with the User's Guide is not covered. BISSELL recommends that the original packaging be kept for the duration of the warranty period in case such need arises within the warranty period that the item need re-packing and transportation.

BISSELL Consumer Care:

If your BISSELL product should require service or if you need information about repairs, authorized service centers in your area, replacement parts or your warranty, please contact BISSELL Consumer Care, as indicated below, or contact your local in-country distributor.

For Australian inquiries:

Telephone: 1.800.811.183

Monday – Friday

9 am – 5 pm

BISSELL AUSTRALIA

PTY LIMITED

42 Rocco Dr.

Scoresby 3179

Victoria

Australia

For New Zealand inquiries:

Telephone: 0800.247.735

Monday – Friday

9 am – 5 pm

Parex Industries Ltd.

5 Tolich Place

Henderson 0610

Auckland

New Zealand

For all other inquiries:

Telephone: 01.616.453.4451

Monday – Friday

8 am – 4 pm

Fax: 01.616.453.1383

BISSELL Homecare, Inc.

P.O. Box 1888

Grand Rapids, Michigan,

49501 U.S.A.

*EXCEPTIONS AND EXCLUSIONS FROM THE TERMS OF THE LIMITED WARRANTY

BISSELL AND ITS IN-COUNTRY DISTRIBUTORS ARE NOT LIABLE FOR INCIDENTAL OR ONSEQUENTIAL DAMAGES OF ANY NATURE ASSOCIATED WITH THE USE OF THIS PRODUCT. BISSELL'S LIABILITY WILL NOT EXCEED THE PURCHASE PRICE OF THE PRODUCT.

THIS WARRANTY IS EXCLUSIVE AND IN LIEU OF ANY OTHER WARRANTIES EITHER ORAL OR WRITTEN. ANY IMPLIED WARRANTIES WHICH MAY ARISE BY OPERATION OF LAW, INCLUDING THE IMPLIED WARRANTIES OF MERCHANTABILITY AND FITNESS FOR A PARTICULAR PURPOSE, ARE LIMITED TO THE ONE YEAR DURATION FROM THE DATE OF PURCHASE AS DESCRIBED ABOVE.

FOR AUSTRALIAN CONSUMERS ONLY: OUR GOODS COME WITH GUARANTEES THAT CANNOT BE EXCLUDED UNDER THE AUSTRALIAN CONSUMER LAW. YOU ARE ENTITLED TO A REPLACEMENT OR REFUND FOR A MAJOR FAILURE AND FOR COMPENSATION FOR ANY OTHER REASONABLY FORESEEABLE LOSS OR DAMAGE. YOU ARE ALSO ENTITLED TO HAVE THE GOODS REPAIRED OR REPLACED IF THE GOODS FAIL TO BE OF ACCEPTABLE QUALITY AND THE FAILURE DOES NOT AMOUNT TO A MAJOR FAILURE.

THIS WARRANTY IS IN ADDITION TO OTHER RIGHTS OR REMEDIES UNDER LAW. NOTHING IN THIS WARRANTY EXCLUDES, LIMITS OR MODIFIES ANY LIABILITY OF BISSELL WHICH IS IMPOSED BY LAW, OR LIMITS OR MODIFIES ANY REMEDY AVAILABLE TO THE CONSUMER WHICH IS GRANTED BY LAW. TO MAKE A CLAIM UNDER THIS WARRANTY CONTACT BISSELL AUSTRALIA PTY LTD (DETAILS ABOVE). CONTACT BISSELL PRIOR TO RETURNING ANY GOODS. WHERE AGREED, BISSELL WILL REIMBURSE REASONABLE POSTAGE / HANDLING COSTS (IF ANY) FOR RETURNING GOODS TO BISSELL.

Don't forget to register your product!

Registering is quick, easy and offers you benefits over the lifetime of your product. You'll receive:

Faster Service

Supplying your information now saves you time should you need to contact us with questions regarding your product.

Product Support Reminders and Alerts

We'll contact you with any important product maintenance reminders and alerts.

Special Promotions

Optional: Register your email to receive notice of offers, contests, cleaning tips and more!

Visit www.bissell.com/registration now!

BISSELL consumer care

For information about repairs or replacement parts, or questions about your warranty, call: **BISSELL Consumer Care**

For Australian inquiries:

Telephone: 1.800.811.183

Monday – Friday

9 am – 5 pm

BISSELL AUSTRALIA

PTY LIMITED

42 Rocco Dr.

Scoresby 3179

Victoria

Australia

For New Zealand inquiries:

Telephone: 0800.247.735

Monday – Friday

9 am – 5 pm

Parex Industries Ltd.

5 Tolich Place

Henderson 0610

Auckland

New Zealand

For all other inquiries:

Telephone: 01.616.453.4451

Monday – Friday

8 am – 4 pm

Fax: 01.616.453.1383

BISSELL Homecare, Inc.

P.O. Box 1888

Grand Rapids, Michigan,

49501 U.S.A.

Or visit the BISSELL website -www.bissell.com

When contacting BISSELL, have model number of cleaner available.

Please record your Model Number: _____

Please record your Purchase Date: _____

NOTE: Please keep your original sales receipt. It provides proof of purchase date in the event of a warranty claim. See Warranty on page 11 for details.



Experts In Home Cleaning™

©2012 BISSELL Homecare, Inc.

Grand Rapids, Michigan

All rights reserved.

Printed in China

Part Number 120-4521

Rev 5/12

Visit our website at:

www.bissell.com