

# KÄRCHER

makes a difference

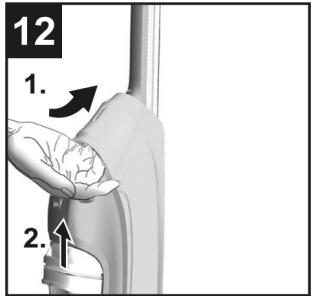
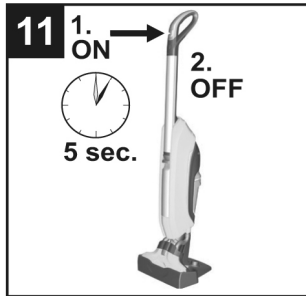
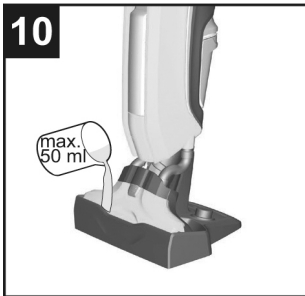
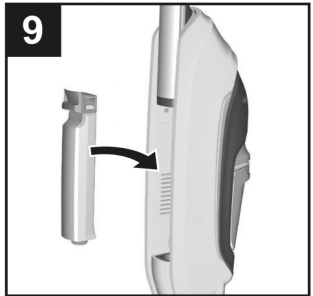
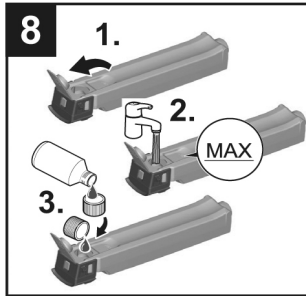
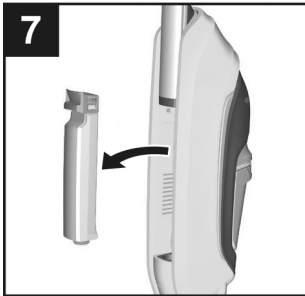
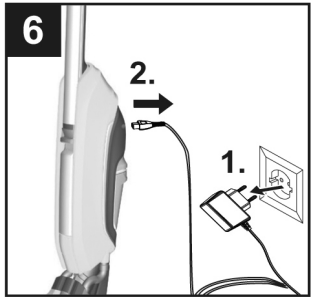
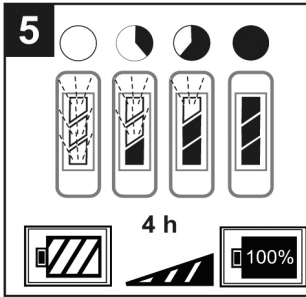
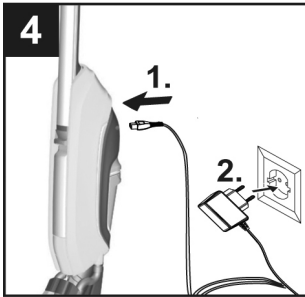
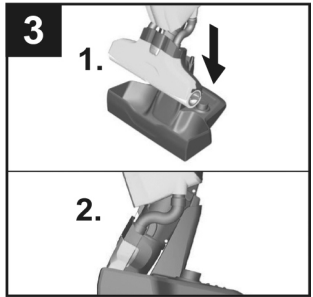
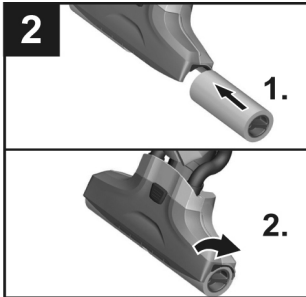
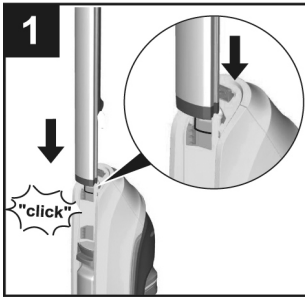
## **FC 5 Cordless** **FC 5 Cordless Premium**

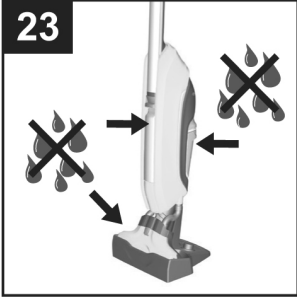
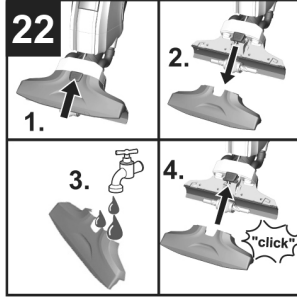
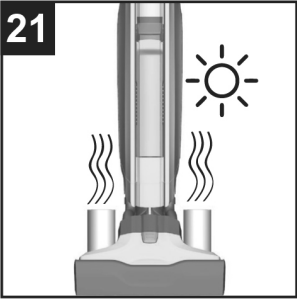
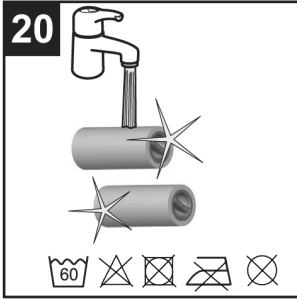
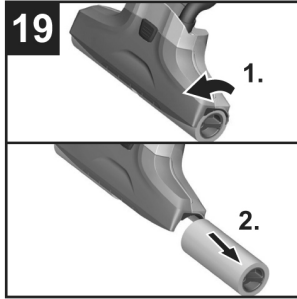
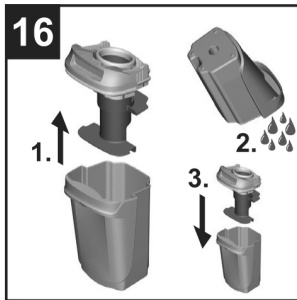
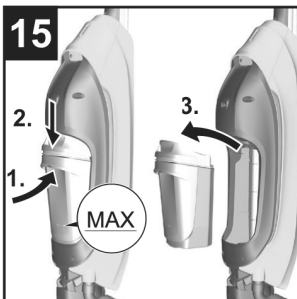
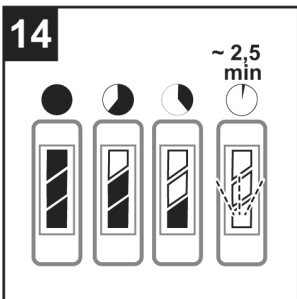
### **Operating Instructions**

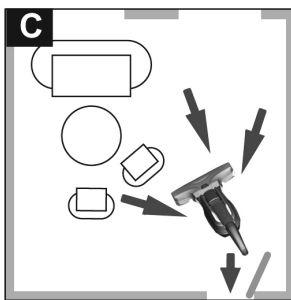
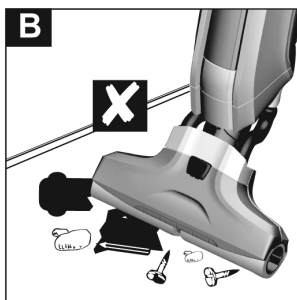
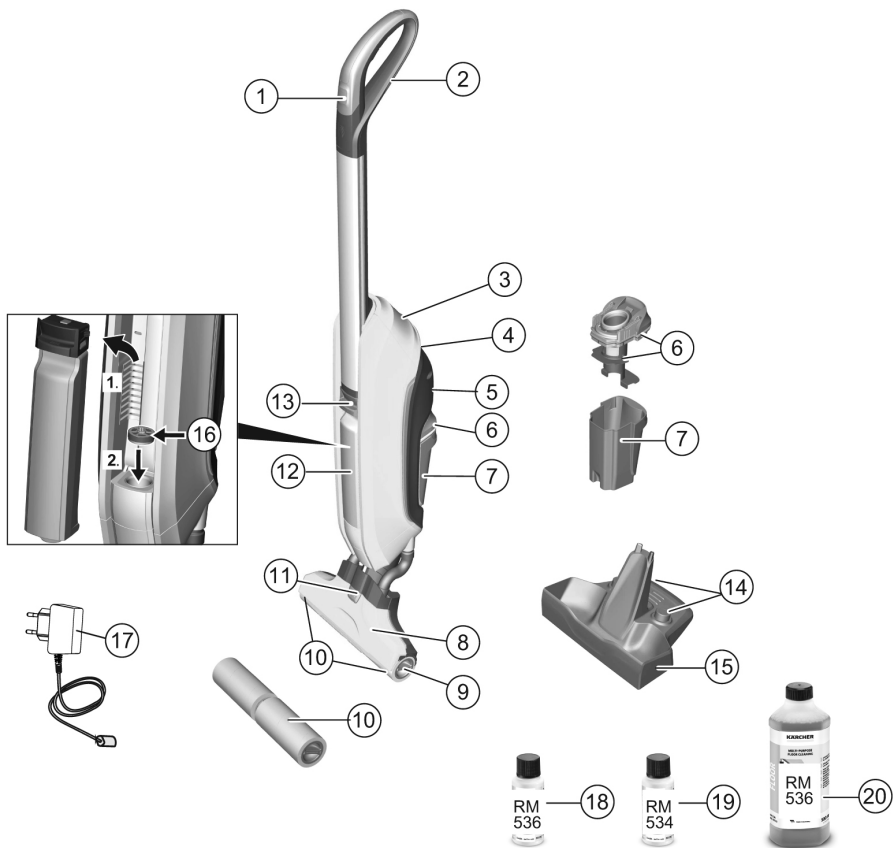
Please read the operating instructions carefully before using the unit.



59688460 (05/19)







## Contents

General information	EN	5
Safety instructions	EN	5
Description of the Appliance	EN	9
Assembly	EN	9
Commissioning	EN	9
Operation	EN	10
Care and maintenance	EN	11
Troubleshooting	EN	12
Technical specifications	EN	13
Customer service	EN	14

## General information



Before using your appliance for the first time, read these original operating instructions, act in compliance with them, and keep them for later use or for subsequent owners.

### Proper use

Use the floor cleaner exclusively for cleaning hard floors in your private household and only on waterproof hard floors.

Do not clean water-sensitive floor coverings such as untreated cork floors (the moisture could penetrate and damage the floor).

The device is suitable for cleaning PVC, linoleum, tiled, stone, oiled and waxed parquet, laminate and all water-resistant floor coverings.

### Environmental protection



The packaging material can be recycled. Please do not place the packaging into the ordinary refuse for disposal, but arrange for the proper recycling.



Old appliances contain valuable recyclable materials and substances that must not be released into the environment. Thus, the appliance and the accumulator contained must not be disposed of via the domestic waste. The disposal can take place via locally available return and collection systems free of charge.

Electrical and electronic devices often contain components which could potentially pose a danger to human health and the environment if handled or disposed of incorrectly. However, these components are necessary for the proper operation of the device. Devices marked with this symbol must not be disposed of with regular household rubbish.

### Notes about the ingredients (REACH)

You will find current information about the ingredients at:

[www.kaercher.com/REACH](http://www.kaercher.com/REACH)

### Scope of delivery

The scope of delivery of your appliance is illustrated on the packaging. Check the contents of the appliance for completeness when unpacking.

In the event of missing accessories or any transport damage, please contact your dealer.

## Spare parts

Only use original accessories and spare parts, they ensure the safe and trouble-free operation of the device. For information about accessories and spare parts, please visit [www.kaercher.com](http://www.kaercher.com).

## Warranty

The warranty terms published by the relevant sales company are applicable in each country. We will repair potential failures of your appliance within the warranty period free of charge, provided that such failure is caused by faulty material or defects in manufacturing. In the event of a warranty claim please contact your dealer or the nearest authorized Customer Service centre. Please submit the proof of purchase. (See address on the reverse)

## Symbols on the machine

### ATTENTION! ATTENTION



The "MAX" marking on the waste water tank must not be exceeded when cleaning work is being performed.

Please observe the following procedure:



1. First empty the waste water tank.



2. Then fill the fresh water tank.



## Safety instructions

- *Apart from the notes contained herein the general safety provisions and rules for the prevention of accidents of the legislator must be observed.*
- *Warnings and notes that are attached on the appliance provide important notes for the safe operation.*

## Hazard levels

### **⚠ DANGER**

*Pointer to immediate danger, which leads to severe injuries or death.*

### **⚠ WARNING**

*Pointer to a possibly dangerous situation, which can lead to severe injuries or death.*

### **⚠ CAUTION**

*Pointer to a possibly dangerous situation, which can lead to minor injuries.*

### **ATTENTION**

*Pointer to a possibly dangerous situation, which can lead to property damage.*

## Electric components

### **⚠ DANGER**

- *Do not immerse the device into water.*
- *Check the faultless condition of the appliance and the accessories before using it. Otherwise, the appliance must not be used.*
- *Immediately replace the charger with the charging cable in case of visible damage.*
- *Turn off the appliance and remove the mains plug prior to any care and maintenance work.*
- *Repair works may only be performed by the authorized customer service.*
- *The appliance contains electrical components - do not clean under running water.*

- *Do not insert conductive objects (such as screwdrivers or the like) into the charging socket.*
- *Do not touch contacts or wires.*
- *The voltage indicated on the type plate must correspond to the supply voltage.*
- *Do not scrape the charger across sharp edges and ensure that it does not get pressed.*

### **⚠ WARNING**

- *The appliance may only be connected to an electric supply that has been installed by an electrician in accordance with IEC 60364.*
- *The appliance may only be connected to alternating current. The voltage must correspond with the type plate of the appliance.*
- *For safety reasons, we recommend that you charge the appliance only via a earth-leakage circuit breaker (max. 30 mA).*

## Charger

### **⚠ DANGER**

*Risk of electric shock.*

- *Never touch the mains plug and the socket with wet hands.*
- *Do not use the charger if dirty or wet.*
- *Do not operate the charger in explosive environment.*
- *Do not carry the charger by holding the mains cable.*
- *Store and use the charger in dry rooms only.*
- *Protect the mains cable against heat, sharp edges, oil and moving parts of the machine.*
- *Avoid using extension wires with multiple sockets and simultaneous operation of multiple devices.*
- *Do not pull the plug from the socket by pulling the mains cable.*
- *Do not cover the charger and keep the air vents of the charger open.*
- *Do not open the charger. Get repairs done only by authorised experts.*
- *Use the charger only to charge approved battery packs.*
- *Immediately replace the charger with the charging cable in case of visible damage.*

## Battery

### **⚠ DANGER**

*Risk of electric shock.*

- *Do not expose the battery to direct sunlight, heat or fire.*
- ⚠ **WARNING**
- *Charge the battery with the enclosed original charger or a charger approved by KÄRCHER only.*

*Use the following adaptor:*



- ***Do not open the battery**, as there is a risk of an electrical shock; also, irritating or caustic vapors can escape.*

## Safe handling

### **⚠ DANGER**

- *The user must use the appliance as intended. The person must consider the local conditions and must pay attention to other persons in the vicinity when working with the appliance.*
- *The appliance may not be operated in explosive atmospheres.*
- *If the appliance is used in hazardous areas the corresponding safety provisions must be observed.*
- *Do not use the appliance if it fell down, is visibly damaged or leaking.*
- *Keep packaging films away from children, there is a risk of suffocation!*

## **△ WARNING**

- *The appliance must not be operated by children or persons who have not been instructed accordingly.*
- *This appliance is not intended for use by persons with limited physical, sensory or mental capacities or lacking experience and/or skills, unless such persons are accompanied and supervised by a person in charge of their safety or they have received precise instructions on the use of this appliance and have understood the resulting risks.*
- *Children must not play with this appliance.*
- *Supervise children to prevent them from playing with the appliance.*
- *Keep appliance out of reach of children as long as it is switched on or hasn't cooled down.*
- *Cleaning and user maintenance must not be performed by children without supervision.*
- *Operate or store the appliance only in accordance with the description or illustration!*

## **△ CAUTION**

- *Create stability for the appliance prior to any work on or with the appliance to prevent accidents or damage.*
- *Never fill solvents, solvent-containing liquids or undiluted acids (e.g. detergents, petrol,*

*paint thinner, and acetone) into the water reservoir as these substances corrode the materials used in the appliance.*

- *Never leave the appliance unattended as long as it is in operation.*
- *Keep parts of the body (e.g. hair, fingers) away from the rotating cleaning rollers.*
- *Keep your hands protected while cleaning the suction head-risk of injury from sharp objects (e.g. splinters).*
- *Keep connection cable away from heat, sharp edges, oil and moving parts.*

## **ATTENTION**

- *Only switch on the appliance when the fresh water tank and waste water tank are fitted.*
- *The appliance must not be used for the intake of sharp or large objects (e.g. shards, pebbles, toy parts).*
- *Do not add acetic acids, descaling agents, essential oils or similar substances to the fresh water tank. Also ensure that the substances are not drawn in.*
- *Only use this appliance on hard floors with waterproof coatings (e. g. varnished parquet, enamelled tiles, Linoleum).*
- *Do not use the appliance for cleaning of carpets or carpeted floors.*



- *Do not use the appliance over the floor grilles of convector heaters. The appliance is not able to take in the water discharged when used above grilles.*
- *In case of longer breaks in operation and after use, switch off the device at the main switch / device switch and pull the charger's mains plug.*
- *Do not operate the appliance at temperatures below 0 °C.*
- *Protect the unit from rain. Do not store outside.*

## Description of the Appliance

### Illustrations on the picture pages

- |    |                                |        |        |
|----|--------------------------------|--------|--------|
| 1  | ON/OFF switch                  |        |        |
| 2  | Handle                         |        |        |
| 3  | Battery indicator              |        |        |
| 4  | Carrying handle                |        |        |
| 5  | Charging socket                |        |        |
| 6  | Waste water tank/separator lid |        |        |
| 7  | Waste water tank               |        |        |
| 8  | Cover suction head             |        |        |
| 9  | Recessed grip cleaning roller  |        |        |
| 10 | Cleaning rollers               |        |        |
| 11 | Lock suction head              |        |        |
| 12 | Fresh water tank               |        |        |
| 13 | Handle fresh water tank        |        |        |
| 14 | Roller storage                 |        |        |
| 15 | Cleaning / park station        |        |        |
| 16 | Filter inlay                   |        |        |
| 17 | Charger with charging cable    |        |        |
| 18 | * Detergent                    | RM 536 | 30 ml  |
| 19 | ** Detergent                   | RM 534 | 30 ml  |
| 20 | ** Detergent                   | RM 536 | 500 ml |
| 10 | ** Cleaning rollers            | 2x     |        |

\* FC 5 Cordless

\*\* FC 5 Cordless Premium

## Assembly

### Illustration 1

- ➔ Insert handle into the basic unit as far as it goes until it engages audibly.  
The handle must sit snugly into the appliance.

## Commissioning

### Installing the rollers

#### Illustration 2

- ➔ Screw the cleaning rollers onto the threaded rod up to the mechanical stop.
- ➔ Pay attention to the colour-codes on the inside of the roller and roller holder on the appliance (e.g. blue should match up with blue).
- ➔ After the installation, check to ensure that the cleaning rollers sit snugly.

### Charging process

#### Illustration 3

- ➔ To stabilise, place the appliance into the cleaning station.

#### Illustration 4

- ➔ Plug the charging cable of the charger into the charging socket on the device.
- ➔ Plug the mains plug of the charger into a power outlet.

#### Illustration 5

- The LED indicator lights display the battery's current charging state.
- All 3 LED indicator lights flash from bottom to top when charging a completely empty battery.
- The lowermost LED lights up continuously when the battery is 1/3 charged, the two upper LEDs continue to flash.
- When the battery is 2/3 charged, the two lower LEDs light up continuously, the uppermost LED continues to flash.
- After the battery has been fully charged, the 3 LED indicator lights will continue to light constantly for 60 minutes. After this time, the LED indicator lights go out.

#### Illustration 6

- ➔ Once the battery is charged, pull the mains plug out of the socket and the charging cable out of the charging socket.

### Fill fresh water reservoir

#### Illustration 7

- ➔ Remove the fresh water tank from the appliance using the handle.

#### Illustration 8

- ➔ Open fuel filler cap.
- ➔ Fill the fresh water tank with cold or lukewarm tap water.
- ➔ KÄRCHER detergents/care agents can also be added to the fresh water tank as required.\*  
See chapter "Detergents and care products".
- ➔ Do not exceed the "MAX" marking when filling.
- ➔ Close tank lock.

#### Illustration 9

- ➔ Insert the fresh water container into the appliance.
- ➔ The fresh water tank must sit snugly into the appliance.

### ATTENTION

\*Follow the recommended dosage instructions on the detergent/care agent.

## Operation

### General information on the operation

#### ATTENTION

##### Illustration **A**

The appliance must only be used for the intake of dirt and fluids (max. 250 ml).

##### Illustration **B**

Before beginning your work, remove any objects, such as shards, pebbles, screws or toy parts from the floor. Before use, check the floor for water consistency at suspect areas. Do not clean water-sensitive coatings, such as untreated cork floors (moisture ingress is possible which may damage the floor).

##### Illustration **C**

To avoid fresh footprints on the freshly-wiped floor, work backwards towards the door.

- Hold the appliance at the handle at angle of approx. 60 degrees.
- Clean the floor by moving the appliance back and forth at a similar speed as if you were vacuum cleaning.
- If the floor is especially dirty, let the appliance glide slowly across the floor.
- For scope of delivery of the roller pads in grey and yellow: Both roller pads have the same functionality, they can be used for different areas of application (colour distinction, e.g. for kitchen and bathroom).

### Turning on the Appliance

##### Illustration **11**

- Press the ON switch briefly.
- After about 1-2 seconds, the rollers begin to rotate and the appliance is ready for use.

### Start working

#### ATTENTION

After switching on the appliance, the cleaning rollers will begin to rotate. Hold the handle tight to prevent the appliance from moving forwards by itself. Make sure the fresh water tank is filled with water and the waste water tank is fitted in the appliance.

##### Illustration **10**

- To quickly wet the rollers, use a measuring cup to fill the cleaning station with 50 ml of fresh water.

##### Illustration **11**

- Switch on the appliance and put it into operation in the station for 5 seconds. The appliance then has the ideal level of moisture in order to allow fast cleaning.
- Switch off the appliance; press the on/off button to do so.

##### Illustration **12**

- Remove the carrying handle from the cleaning station and set it on the floor.
- Hold the appliance firmly using the handle.

##### Illustration **13**

- To switch on the appliance press the on/off switch.

### Battery service life

##### Illustration **14**

- 3 LEDs illuminated - 3/3 battery run time (full run time).
- 2 LEDs illuminated - 2/3 battery run time.
- 1 LEDs illuminated - 1/3 battery run time.
- The rollers signal 5 minutes before the run time ends by changing rotation direction.
- The lowermost LED starts to flash approx. 2.5 minutes before the battery has to be charged.
- The device shuts off automatically 1.5 minutes before the run time ends.
- The remaining 1.5 minutes can be used for cleaning the device in the station by switching it back on again.  
See "Cleaning the appliance by rinsing".
- The lowermost LED flashes for another 10 seconds when the battery is empty and the device has switched off.

### Refill detergent

#### ATTENTION

Before filling the fresh water tank, please empty the waste water tank. In this way you can avoid overflowing of the waste water tank.

See Chapter "Emptying the waste water tank".

##### Illustration **3**

- Place the appliance in the cleaning station.

##### Illustration **7**

- Remove the fresh water tank from the appliance using the handle.

##### Illustration **8**

- Open fuel filler cap.
- Fill the fresh water tank with cold or lukewarm tap water.
- Add cleaning or disinfecting agent as required.
- Do not exceed the "MAX" marking when filling.
- Close tank lock.

##### Illustration **9**

- Insert the fresh water container into the appliance. The fresh water tank must sit snugly into the appliance.

### Emptying the waste Water tank

#### ATTENTION

The water level must be checked at regular intervals to prevent the waste water tank from overflowing. Do not exceed the "MAX" marking.

##### Illustration **3**

- Place the appliance in the cleaning station.

##### Illustration **15**

- Hold the waste water tank at the bottom handle. At the same time, press the upper handle downwards with your thumbs.
- Remove waste water tank.

##### Illustration **16**

- Remove the cover from the waste water tank.
- Empty the waste water tank.
- Depending on the amount of dirt, clean the lid/separator and waste water tank with tap water.
- Place the lid on the waste water tank. The lid must sit snugly onto the waste water tank.

##### Illustration **17**

- Insert the waste water tank into the appliance. The waste water tank must sit snugly in the appliance.

## Interrupting operation

### Illustration 13

- Switch off the appliance; press the on/off button to do so.

### Illustration 3

- Place the appliance in the cleaning station.

### ATTENTION

*To ensure the stability of the appliance during down-time, always put the appliance into the cleaning/park station. A lack of stability can cause the appliance to topple over, which can cause fluid to leak that damages the floor covering.*

## Turning Off the Appliance

### Illustration 13

- Switch off the appliance; press the on/off button to do so.

### Illustration 3

- Place the appliance in the cleaning station.

### Illustration 15

- Remove the waste water tank.

### ATTENTION

*After completing the work, clean the appliance by applying a rinse cycle.*

*See "Cleaning the appliance by rinsing".*

### Illustration 23

- Completely empty the appliance.

### Illustration 15

until

### Illustration 16

- Empty the waste water tank.  
See Chapter "Emptying the waste water tank".
- If there is still water in the fresh water tank or cleaning station, empty it.

## Storing the Appliance

### ATTENTION

*To prevent odours developing, the fresh water and waste water tank must be completely emptied prior to storing the appliance.*

### Illustration 12

- Move the appliance to the place of storage using the carrying handle.

### Illustration 3

- To stabilise, place the appliance into the cleaning station.
- Store the appliance in a dry room.

## Care and maintenance

### Cleaning appliance with rinsing process

### ATTENTION

*When the work is finished, always rinse the appliance through with the cleaning station and fresh water. This is the best way of cleaning the appliance. It prevents the build-up of dirt and bacteria or unpleasant odours.*

### Illustration 13

- Switch off the appliance; press the on/off button to do so.

### Illustration 3

- Place the appliance in the cleaning station.
- For the rinsing process, fill the fresh water tank with cold or lukewarm tap water to completely remove detergent residue from the suction ducts and slits on the suction head.
- Insert the fresh water container into the appliance.

### Illustration 13

- Remove the waste water tank and empty it. See Chapter "Emptying the waste water tank".
- Fill the measuring cup with 200 ml water.
- Fill the cleaning station with water.
- If necessary, add appropriate KÄRCHER cleaning agents for the rinsing procedure.
- To switch on the appliance press the on/off switch.
- Allow the appliance to run for 30-60 seconds until the water is completely drawn out of the cleaning station.

The rinsing procedure is now complete.

### Note

The longer the appliance is switched on, the less residual moisture is left over in the cleaning rollers.

- Switch off the appliance; press the on/off button to do so.
- If there is still water in the fresh water tank, remove the fresh water tank and empty it.

### Illustration 16

- Empty the waste water tank. See Chapter "Emptying the waste water tank".
- If there is still water in the fresh cleaning station, empty it.

## Cleaning the rollers

### ATTENTION

*The fresh and waste water tanks must be emptied before the appliance is set down on the ground for roller removal. This prevents any fluids from leaking out of the tank when it is laid on the ground.*

### Note

In the case of heavy contamination, clean the cleaning rollers separately.

### Illustration 13

- Switch off the appliance; press the on/off button to do so.
- If there is still water in the fresh water tank, remove the fresh water tank and empty it.
- Empty the fresh water reservoir.

### Illustration 16

- Empty the waste water tank.

### Illustration 19

- Twist out the cleaning rollers from the recessed grip.

### Illustration 20

- Clean the cleaning rollers under running water.
- or
- Wash the cleaning rollers in the washing machine up to 60°C.

### ATTENTION

*Do not use any soft detergents when cleaning in the washing machine. This avoids causing damage to the microfibrres. It also preserves the high performance levels of the cleaning rollers.*

*The cleaning rollers are not suitable for the tumble dryer.*

### Illustration 21

- Once cleaned, place the rollers onto the cleaning station's roller storage and leave to air dry.
- Drying time can be minimized by wringing out the rollers beforehand.

## Cleaning the suction head

### ATTENTION

In the case of heavy contamination or if parts such as stones or splinters get into the suction head, it will need to be cleaned. While the appliance is working, these parts will cause a rattling noise or will block up the suction ducts, diminishing suction performance.

Illustration 13

- Switch off the appliance; press the on/off button to do so.

Illustration 19

- Remove the cleaning rollers.  
See "Cleaning the rollers".

Illustration 22

- Press the suction head lock.
- Take off the suction head lid.
- Clean the suction head lid under running water.
- If necessary, remove particle deposits from the suction ducts and slits in the suction head lid.
- Clean the suction head with a damp cloth.
- Fix the suction head lid onto the suction head.

### Note

When attached to the suction head the suction head lid must lock in place audibly.

Illustration 2

- Screw the cleaning rollers onto the threaded rod up to the mechanical stop.  
See "Cleaning the rollers".

## Clean the waste water tank

### ATTENTION

Regularly clean the waste water tank to prevent blockage to the separator with dust and dirt or to prevent dirt from building up in the tank.

Illustration 13

- Switch off the appliance; press the on/off button to do so.

Illustration 3

- Place the appliance in the cleaning station.

Illustration 15

until

Illustration 16

- Remove the waste water tank from the appliance. See Chapter "Emptying the waste water tank".
- Clean the lid/separator and waste water tank with tap water.
- The waste water tank can also be cleaned in the dishwasher.

Illustration 17

- After cleaning, put the waste water tank with lid back into the appliance.

## Detergents and care products

### ATTENTION

The use of unsuitable cleaning and disinfecting agents can damage the appliance and will void the warranty.

### Note

Add cleaning or disinfecting agent as required.

- When dosing the detergent and care product, follow the manufacturer's dosage instructions.

Illustration 8

- To prevent foaming, first fill the fresh water tank with water then cleaning or disinfecting agent.
- To avoid exceeding the "MAX" fill level on the fresh water tank, leave room for the cleaning or disinfecting agent when filling with water.

## Troubleshooting

Often, failures have simple causes and you can do the troubleshooting yourself using the following overview. If you are in doubt or if the failure is not listed here please contact the authorized customer service.

### Battery is not charging

- Charging plug/mains plug not correctly connected.
- Connect charging plug/mains plug correctly.

### The device cannot be switched on

- Battery is empty.
- Charge the device.
- Check whether the charging cable is still plugged into the device.
- Take out charging cable, operation is not possible while charging cable is plugged in.

### LED fault display

Lowmost LED flashes when the device is switched on and does not start.

- Battery is empty
  - Charge the device.
- All LEDs flash quickly simultaneously.
- Use of wrong or defective mains plug.
  - Use original mains plug/replace defective mains plug.

or

- Device too hot during use (e.g. when operating in high ambient temperatures).
- Take a break and let the device cool down.
- If the device also switches off:
- Take a break and let the device cool down.
- The device can only be switched on again once it has cooled down enough.

### Lack of roller moistening with fresh water

Filter inlay is not inserted.

(see graphic for description of the device)

- Remove fresh water tank and insert filter inlay with rubber pin facing upwards.

Filter inlay is inserted the wrong way round.

- Remove filter inlay and insert with pin facing upwards.

The suction hose is blocked by deposits of dirt.

- Carefully remove the suction hoses from the suction head and basic unit.
- Place the suction hoses in cold water for 10–20 minutes.
- Clean suction hoses with a dull object and/or under running water.

### Appliance is not sucking up dirt

No water in the water reservoir.

- Refill water
- Fresh water tank does not fit properly in the device.
- Insert the fresh water tank so that it sits snugly in the appliance.

Cleaning rollers missing or not fitted correctly.

Illustration 2

- Fit the cleaning rollers or turn them onto the roller holder up to the mechanical stop.

Cleaning rollers are contaminated or worn.

- Clean the cleaning rollers.
- or
- Replace the cleaning rollers.

### Rollers do not turn

Rollers are blocked.

Illustration **19**

- Remove rollers and check if an object has become stuck in the rollers.
- Check that the rollers are screwed in as far as they will go onto the roller holder.

### Loud rattling when switched on

Rollers are too dry.

- Moisten the rollers/the device with 50 ml of water in the park station.

### Rattling noise in the suction head

There are parts (e.g. stones or splinters).

Illustration **22**

- Remove suction head lid and clean the suction head.  
See Chapter "Cleaning the suction head".

### Suction power decreases

The suction ducts and slits on the suction head are blocked.

Illustration **22**

- Remove suction head lid and clean the suction head.  
See Chapter "Cleaning the suction head".

### Appliance is leaking waste water.

Waste water tank is overfilled.

Illustration **15**

until

Illustration **16**

- Empty the waste water tank right away.  
See Chapter "Cleaning the waste water tank".

Waste water tank does not fit properly in the appliance.

- Check whether the lid is fit securely on the waste water tank.  
See Chapter "Cleaning the waste water tank".

Separator is blocked.

- Remove lid from the waste water tank and clean the separator.  
See Chapter "Cleaning the waste water tank".

The filter net of the waste water tank separator was damaged during cleaning.

- Renew separator.

### Appliance leaves streaks behind on the floor

Cleaning or disinfecting agents are not suitable for the appliance or were dosed incorrectly.

- Only use detergents and care products approved by the manufacturer.  
See chapter "Detergents and care products".

- Follow the manufacturer's dosage instructions.

The initial moistening of the rollers was not used or was not used long enough, meaning that the rollers are not completely moistened (rollers therefore only clean partially).

Illustration **10**

- Completely moisten rollers.

### Removing the handle from the basic unit

#### ATTENTION

*Do not remove the handle from the basic unit once it has been assembled.*

*The handle may only be removed from the basic unit if the unit is sent out for service purposes.*

Illustration **24**

See illustration at the end of the operating instructions

- Insert screwdriver at a 90 degree angle in the small opening at the rear side of the handle and remove handle.

#### ATTENTION

*Please ensure that the connection cable between the basic unit and the handle are not damaged.*

### Technical specifications

#### Electrical connection

Nominal battery voltage 25,2 V

Protection class IPX4

Device III

Protective class

Charger protection class II

Rated power of appliance 165 W

Battery type Li-Ion

Operating time with full charge approx.  
20 min

Charging time for empty battery 4 h

Charger initial voltage: 30 V

Output current, charger 0,6 A

#### Performance data

Roller revolutions per minute 500 rpm

#### Filling quantity

Fresh water tank 400 ml

Cleaning station 200 ml

#### Dimensions

Weight (without accessories and cleaning fluids) 4,4 kg

Length 320 mm

Width 270 mm

Height 1220 mm

Cable length

Charger 1500 mm

#### Subject to technical modifications!

## Customer service

### **Australia**

KÄRCHER Pty. Ltd.  
385 Ferntree Gully Road,  
Mount Waverley, Victoria, AU. 3149

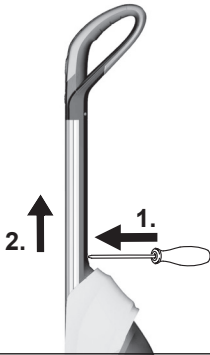
1800 675 714 (Free Call)  
[www.karcher.com.au](http://www.karcher.com.au)

### **New Zealand**

Karcher Ltd.  
66 Allens Road,  
East Tamaki, Auckland

(09) 274-4603  
[www.karcher.co.nz](http://www.karcher.co.nz)

24





[www.kaercher.com/dealersearch](http://www.kaercher.com/dealersearch)

**Alfred Kärcher SE & Co. KG**  
Alfred-Kärcher-Str. 28-40  
71364 Winnenden (Germany)  
Tel.: +49 7195 14-0  
Fax: +49 7195 14-2212

